



EMPIRE  
GLOBAL  
LOGISTICS



**EMPIRE GLOBAL  
LOGISTICS  
CO.,LTD**



# Background

**Empire Global Logistics Co.,Ltd.  
Grand Dragon Logistics Co.,Ltd.**

was set up a group of highly experienced people who have been in the freight forwarding business for more than 10 years. Our group work exclusively with freight forwarding and customs brokerage companies. We offer highly competitive air and sea freight rates and transportation services around the world.

**Empire Global Logistics Co.,Ltd.  
Grand Dragon Logistics Co.,Ltd.**

has grown to become one of the leading logistics solution providers and has taken its place as one of the leading freight forwarding companies in Thailand focusing our efforts on improving customer satisfaction. The growth well of our.



# Our Consolidation

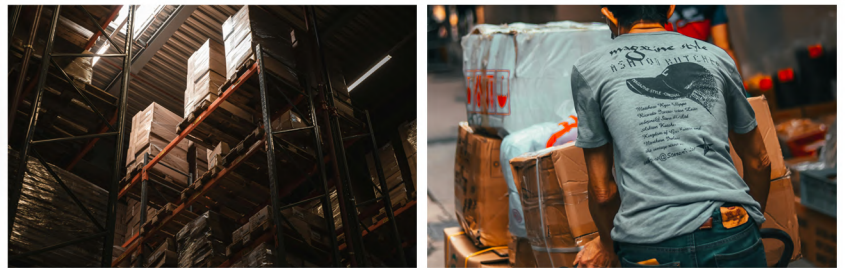
The cargo arrived to warehouse

1



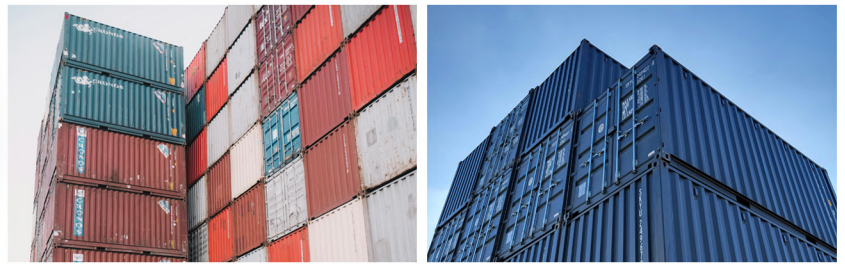
Load cargoes into containers

2



All cargoes stuffed into containers

3



Container number

4



Seal number & Trucking

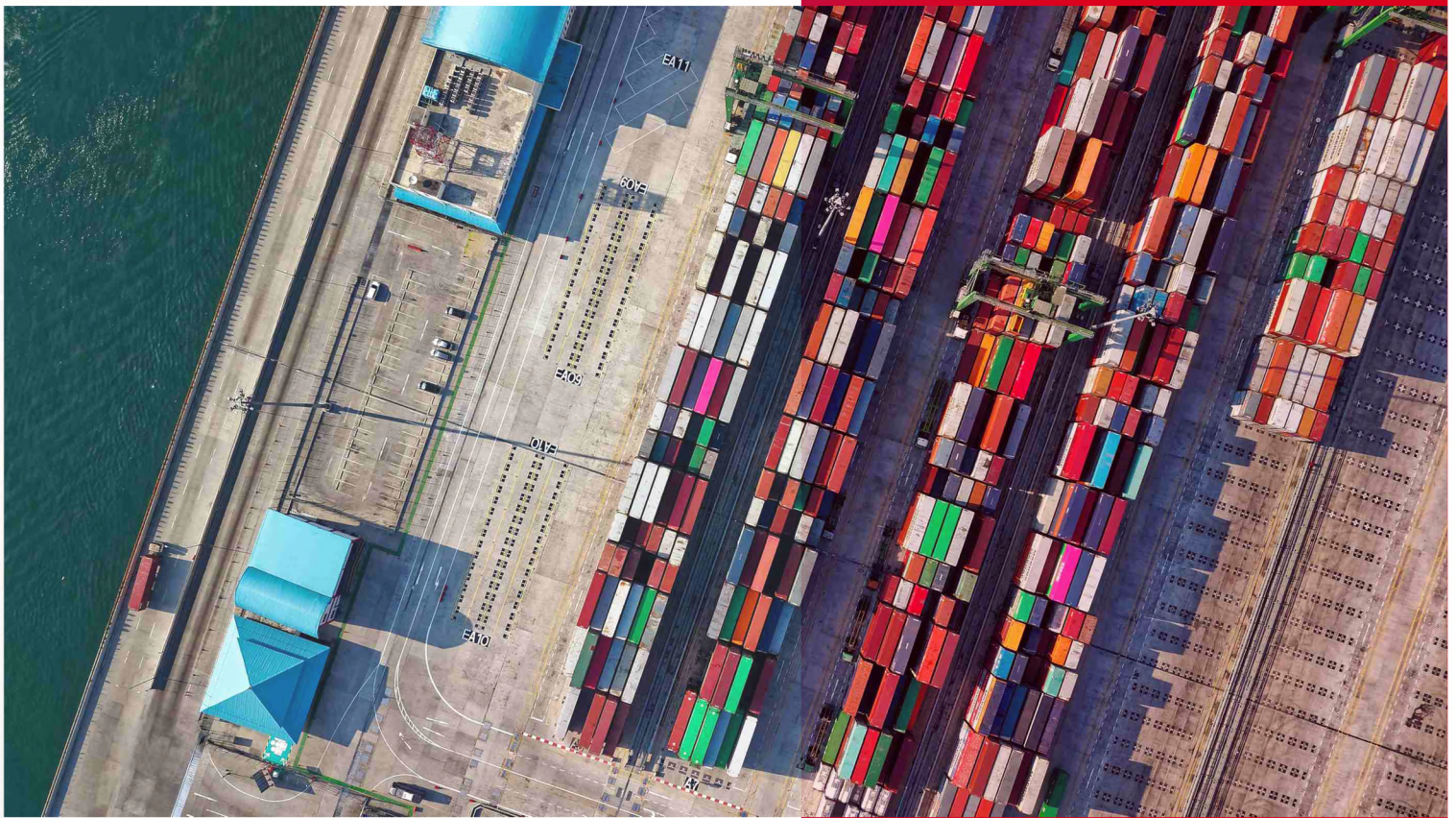
5



# Service

## We offer:

- AIR FREIGHT SERVICE
- FCL (Full Container load)
- LCL (Less than Container load)
- Project Handling , Oversize Cargo and Breakbulk Cargo
- Dangerous or Hazardous Cargo
- Customs Clearance
- Marine Insurance Brokerage
- Inland Transportation
- Cross-Border Transportation
- Door to door Service
- Industrial Packaging and Removal
- Our Global Network – WLA network and ABC European Group



## Our group company

We are Empire Global Logistics Co.,Ltd. have a group companies with **Grand Dragon Logistics Co.,Ltd.** are main service export/import from/to Thailand.

Our group company has competitive rates with many carriers such as Maersk Lines, MSC. CMA CGM, K-Line and etc. Company strength is ability to offer strong bargaining power for new exporters when dealing with carriers.

You can visit our group company at [www.empireglobal.co.th](http://www.empireglobal.co.th)

Office Hours : Mon-Fri : 8.30 am to 5.30 pm

## Referred Customers:

- Capital Rice Co.,Ltd.
- Bangkok Ranch Public Company Limited
- Uthai Produced
- Chock Samut Marine Co.,Ltd.
- American Standard
- Thai Summit Marketing Co.,Ltd.
- Kraft Food
- Seafresh Industry Public Company Limited
- Versace
- BJC M-Point International Co.,Ltd.
- Next
- Masita Seaweeds
- Sunct Company Co.,Ltd.
- Anova Foods Co.,Ltd.

# Global Network

Empire Global Logistics Co.,Ltd.  
is one of the member of the WLA network and ABC  
European Group, have an agents in worldwide.

WLA Global network and ABC European Group  
is one of largest of independent air, ocean and logistics  
business in the world.



# Certificate

OF JCTRANS MEMBERSHIP

Member ID:157205

EMPIRE GLOBAL LOGISTICS CO.,LTD.

has successfully complied with the conditions of **JCT** Premium membership

2025.01 - 2027.01

VALID TERM

*Jacy Qiu*

Jacy Qiu, Chief Executive Officer





# WORLD LOGISTIC ALLIANCE

THIS CERTIFIES THAT

**EMPIRE GLOBAL LOGISTICS CO. LTD.**

IS AN APPROVED , INDIVIDUAL WLA MEMBER  
MEMBERSHIP No. 181

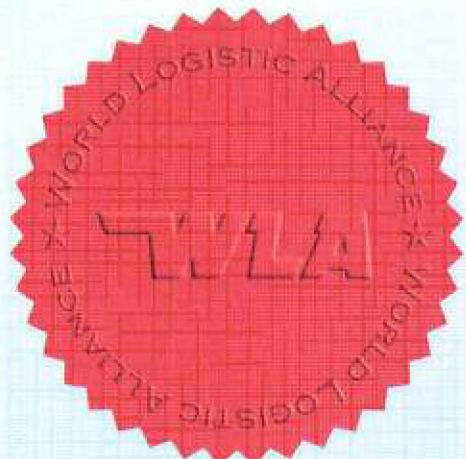
FOR

JUN 2010 - MAY 2011

**WLA** WORLD LOGISTIC ALLIANCE

FOUNDER

TREASURER







No. E1009172073267

Partnerships and Companies Registration Office  
Department of Business Development  
Ministry of Commerce

## CERTIFICATE OF BUSINESS REGISTRATION

This is to certify that EMPIRE GLOBAL LOGISTICS COMPANY LIMITED was registered as a juristic person in accordance with the Civil and Commercial Code, on 18 April B.E. 2551 (2008), with Business Registration Number 0105551043656. The particulars as shown in the Register of Juristic Person as of the date of issuance of this Certificate are as follows:

1. Name of the Company: EMPIRE GLOBAL LOGISTICS COMPANY LIMITED
2. Number of director(s): 1 as named below:
  1. Mr. Yot Jirapachotehirun
3. Authorized signatories : One director signs his/her name with the company's common seal being affixed.
4. Registered capital: 2,000,000 Baht (Two Million Baht Only)
5. Location of Head office: 610/6, Phayanak Road, Thanon Phetchaburi Sub-district, Ratchathewi District, Bangkok.
6. The Company Registered 25 items of Business activities, as shown in the copy of the 3 pages document attached hereto and signed by the authorized Registrar.

Issued on 18 December B.E. 2567 (2024)

(Mr. Wichai Kanrahong)

Registrar

Note : The original certified document will remain as an electronic file. All printed documents from this file is considered as a copy.



กรมพัฒนาธุรกิจการค้า กระทรวงพาณิชย์  
Department of Business Development  
Ministry of Commerce

ก้าวล้ำนำธุรกิจ  
สู่ยุคดิจิทัล

Leading Business  
Towards Digital  
Transformation



This Certificate has been issued electronically and contains the information as of its issuance date. It is advised to check the notes at the end of this certificate whenever it is referenced. This certificate can be verified using the QR Code or by accessing the Department's website ([www.dbd.go.th](http://www.dbd.go.th)) within one year as of the issuance date.

Ref: E671009172073267

Issued Time : 2024-12-18T14:31:09.106

1/5



**EMPIRE GLOBAL LOGISTICS CO.,LTD**  
**GROUP COMPANY GRAND DRAGON LOGISTICS CO.,LTD**

610/7 Phetchaburi Road, Phayathai, Rajtavee, Bangkok 10400  
Tel : +662-214-1821 Fax : +662 611 1399